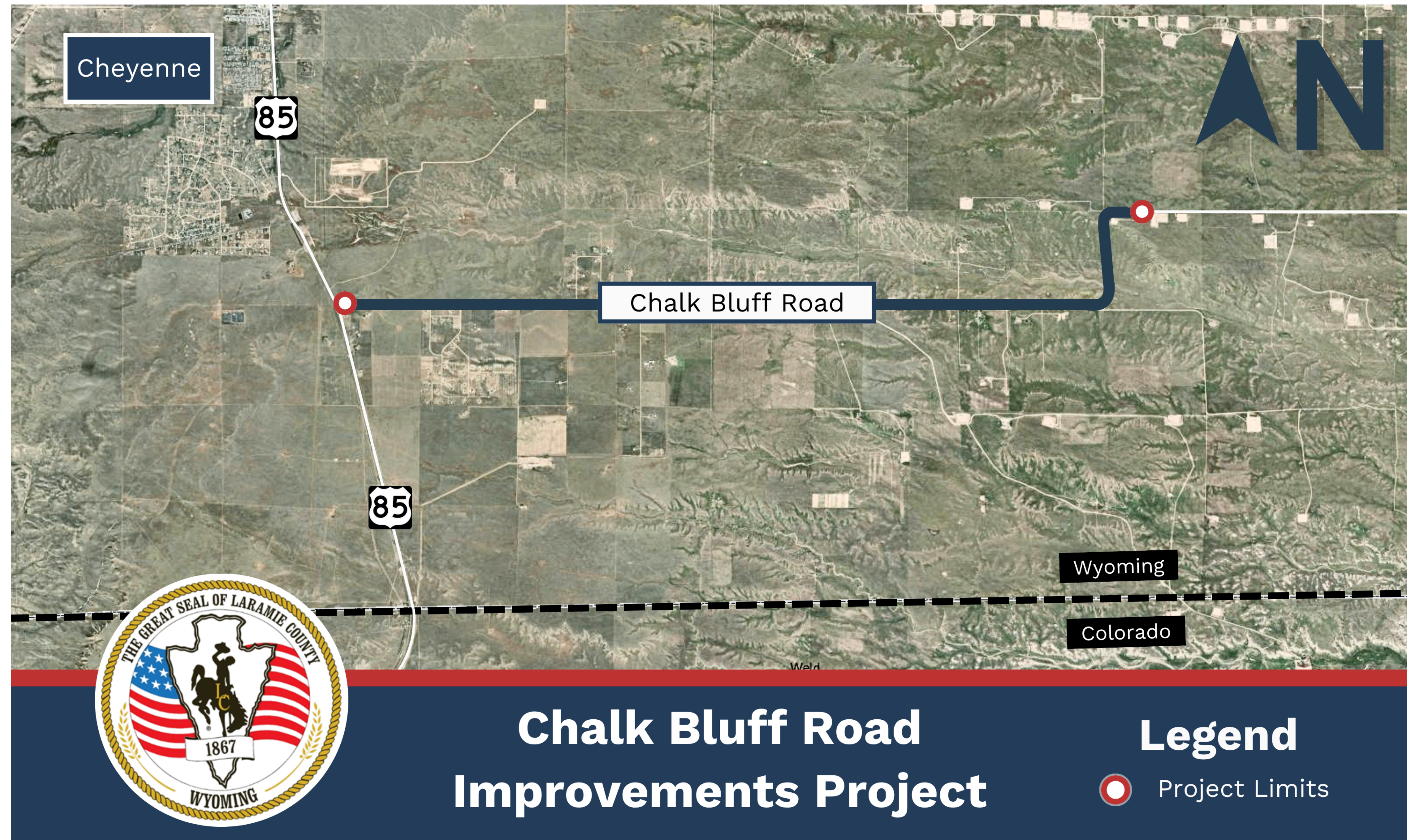


Project Location



Chalk Bluff Road Improvements Project

Legend

 Project Limits

The Chalk Bluff Road Improvements Project will begin at the intersection of Chalk Bluff Road and U.S. Highway 85, located just south of Cheyenne. From this point, the project extends approximately nine miles east along Chalk Bluff Road, towards Carpenter.

About the Project

Laramie County will begin a major road improvement project on Chalk Bluff Road, rebuilding and widening about nine miles of roadway. Set for completion in 2026, the project supports the County's broader plan to enhance transportation, promote smart growth and maintain a high quality of life as the region expands.

Project Benefits

Widening and rebuilding Chalk Bluff Road will offer many benefits to the community. Drivers will notice smoother pavement, wider travel lanes and an overall safer road. These upgrades are designed to lower the risk of accidents, especially in areas that currently feel too narrow or worn down. The new road will also be better suited for larger vehicles, including farm equipment and service trucks, improving access for everyone who uses it.

What's Next

Laramie County is committed to keeping the public informed throughout the entire construction process. Another public open house will be scheduled after a contractor is selected and prior to major work taking place. This will give community members an opportunity to learn more about the construction processes and the anticipated impacts to Laramie County citizens. Details about the open house will be shared in the coming weeks on the Chalk Bluff Road Improvements Project website.

If you have questions in the meantime, please email them to:

ChalkBluffRoad@getinfonow.us



**We will follow up with you
as soon as we can.**

Funding

Funding for the project is set forth in a Memorandum of Understanding (MOU) between Laramie County and TGE Wyoming 222, LLC (developer of Solar Farm), approved by the Board of County Commissioners on August 6, 2024.

A few key points from the MOU related to funding and/or next steps:

TGE is managing the design phase, while the construction phase, including bidding and construction management, will be overseen by Laramie County.

Per the MOU, "No construction related to the Road Project can commence until the TGE Lump Sum is deposited in the Road Account." The "TGE Lump Sum" deposit depends on the "Final Investment Decision" through TGE. This means the project can be bid once we have received the "TGE Lump Sum".



We are unsure of the time line for construction to commence, however, we will keep everyone informed as information becomes available. Make sure and mark that you would like to receive project updates on the sign-in sheet!

Updates to Mailbox Locations (USPS)

With this reconstruction project, safety is paramount and of the utmost importance. With that in mind, we will transition to specific mailbox turnouts and Cluster Box Units (CBU's). See the example picture below.

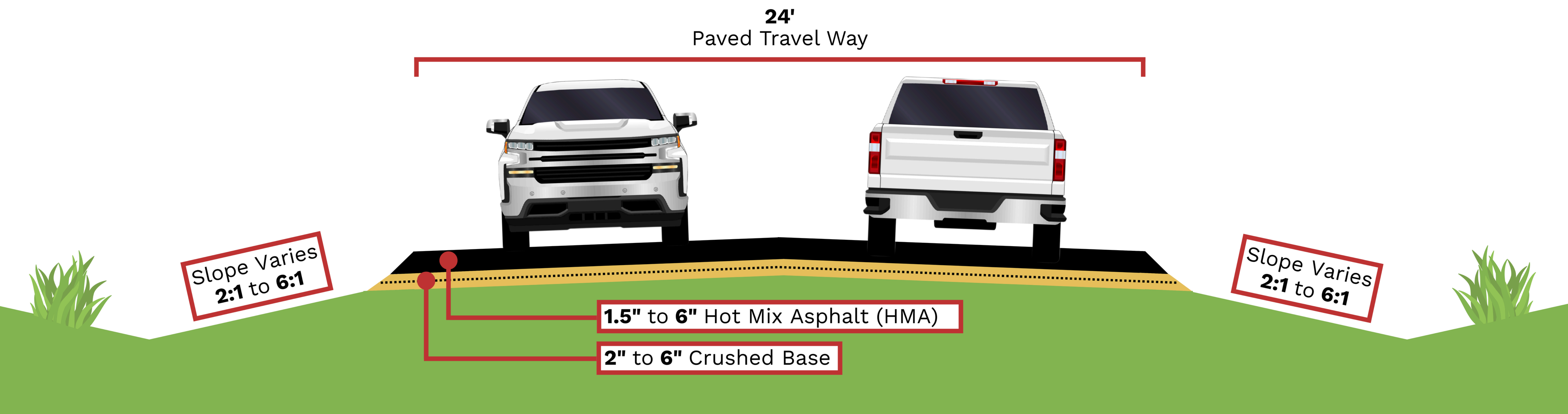


We recognize the impact this could have on the citizens within the project area. This decision was made in conjunction between the USPS and Laramie County for the safety of our mail carriers and citizens collecting mail along this busy road.



Make sure and check out the table around the room with the mailbox locations!

Existing Paved Road Typical Section - 24' Paved Roadway



Proposed Paved Road Typical Section - 32' Paved Roadway

